

Contra Altklarinet

Selectie

arr. Frank van der Poel

♩=104

ff

8

15 1.

21 2.

26 A

33 1. 2. ff

40 B mf f

48 mp f

56 C f

63 mf

70 1. 2.

Contra Altklarinet

76 D 10 E 4

94

100

106 F 2.

113

119

127 G ♯ = 120

134

141 1. 2.

148

155

161



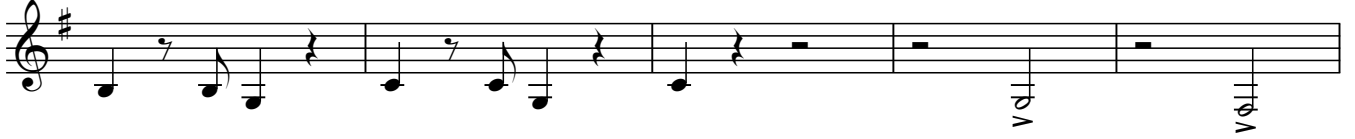
168



173



179



184

